



Poly-Check Fixed Length Seal

Page 1 of 2

The Poly-Check is an economical, fixed length plastic seal well established in the logistics world for the sealing of trailers.

Applications

- Railroad cars
- Trucks & trailers
- Intermodal containers
- Tote boxes
- Cabinet/doors/hatches
- Gates and fire doors
- Side curtains & tilts
- In-bond shipments

Features

- One piece seals for maximum security and proper sealing engagement.
- Plastic seal blushes if tampered with.
- Positive snap lock design with protruding locking points, verify locked position.
- As an alternative to "cutting", each seal has an integral break point for easy, authorized removal.

Standard Colors

- Red
- Light Blue
- Mint Green
- Yellow

Marking

- Laser Marking
- Numbering: 7 digits Lettering: 3 lines of 8 characters
- Laser marked printed barcoding available.

Material

- Polypropylene

Dimensions

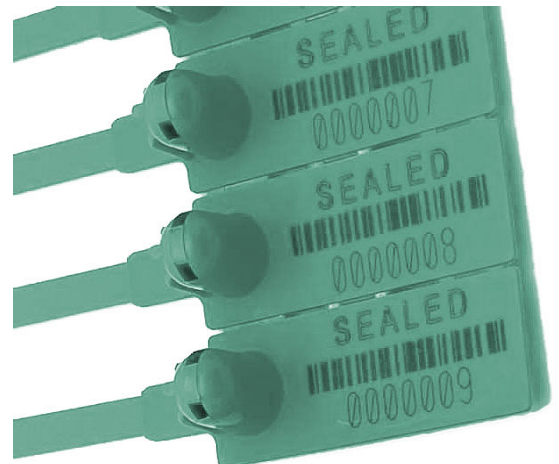
- 10" (255mm) overall length
Tail: 7.48" x 0.28" (190mm x 7mm)
Flag: 1.97" x 0.75" (50mm x 19mm)

Strength

Average pull apart force for polypropylene:
With standard integral security/break point - 65lb (29.5kg)

Packaging

Delivered in mats of 10 seals boxed in 1000's
Box Dimensions: 21.65"x9.06"x7.87" (550mmx230mmx200mm)
Box Weight: 8.38lb (3.8kg)

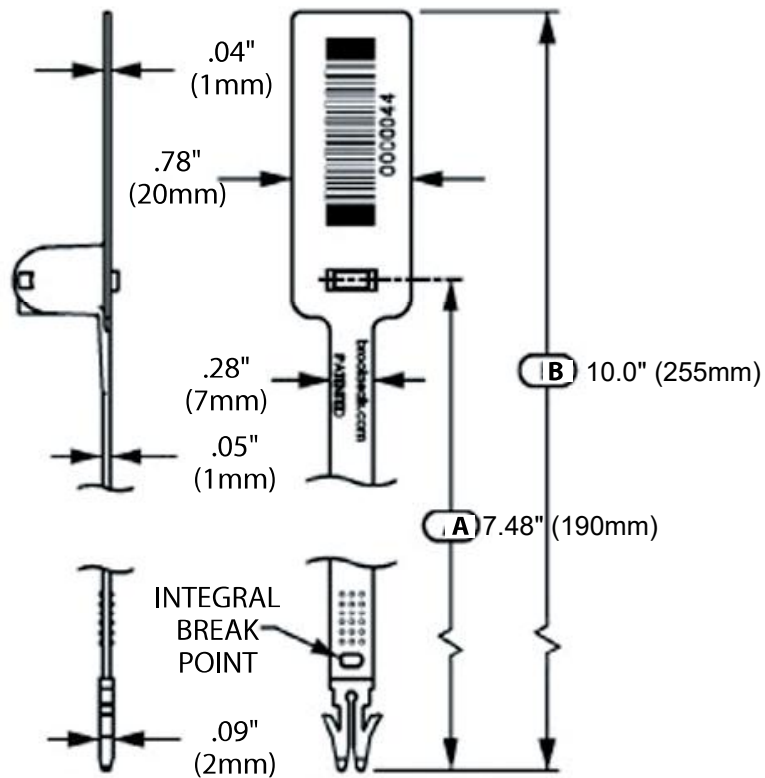




Poly-Check Fixed Length Seal

Page 2 of 2

The Poly-Check is an economical, fixed length plastic seal well established in the logistics world for the sealing of trailers.



The locking prongs protrude from the dome to verify seal is "locked"

