



NL-2 ANCHOR SEAL

The NL-2 Anchor Seal was designed as a replacement for lead seals. This seal type is called "Anchor" and contains a polycarbonate body, which interlocks with an polycarbonate insert. It is available as standard with clear body and insert with 18" attached wire. Available in other colors with minimum of 50,000 units.

APPLICATIONS

- Electric/Gas/Water Meters
- Bulk Tanker Valves/Hatches
- Storage Devices
- Taxi Meters
- Ammunition Boxes
- Drum-Ring Closures
- Valves
- ATM Cassettes

FEATURES

- Polycarbonate & stainless steel construction.
- Flexible wire, available in 18" length.
- Clear body shows immediate evidence of tampering.
- Double-locking mechanism provides improved strength and security.
- Individually numbered and stamped with company name & logo on body only.
- Also available without wire, to be used with cut wire or spooled wire (sold separately).
- Pull Strength: Over 42 Kgf / 92.5lbs

MATERIAL

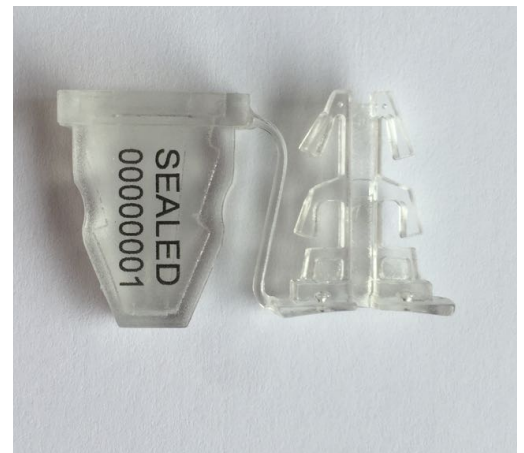
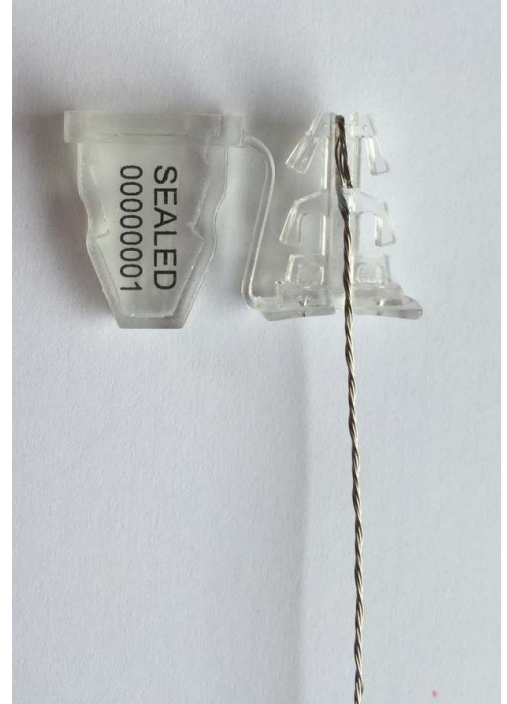
- Seal: Clear Polycarbonate Plastic
- Wire: Stainless Steel

DIMENSIONS

Wires: 18" Attached Wire

MARKING/PRINTING

- Numbering: 8 digits, and logo laser marked.
- Numbered on body only.



NL-2 ANCHOR SEAL

SPECIAL COLORS

Yellow/Red/Blue/Green available as custom order (50,000 unit minimum)



PACKAGING

- 50/bag
- 20 bags/box
- Total of 1,000/carton

Carton Information With Wire:

Carton Dimensions:

- 20 cm x 41,5 cm x 47 cm / 17.87 in x 16.33 in x 18.5 in

Carton Volume:

- 0.039 cubic meter / 1.37 cubic feet

Carton Weight:

- 5.92Kg / 13.05lbs

Units Per Carton:

- 1,000 units

Carton Information Without Wire:

Carton Dimensions:

- 20 cm x 41,5 cm x 47 cm / 17.87 in x 16.33 in x 18.5 in

Carton Volume:

- 0.039 cubic meter / 1.37 cubic feet

Carton Weight:

- 5.75Kg / 12.67lbs

Units Per Carton:

- 1,000 units

