

Intermodal II® Bolt Seal

The Intermodal II® is an ISO 17712: 2013, C-TPAT Compliant high security bolt seal which consists of a steel bolt and a plastic-coated steel locking chamber. The Intermodal II container seals are designed for ISO containers and high value cargo shipments.

ISO 17712: 2013 and C-TPAT COMPLIANT

APPLICATIONS

- Truck & Trailer Doors
- Intermodal Containers
- Box Car Doors

FEATURES

- ISO 17712: 2013 and C-TPAT Compliant
- Locking insert spins freely to confirm seal integrity
- High impact plastic cover on locking chambers clearly indicate tampering
- Removed with bolt cutters
- Metal locking end encased in consecutively numbered body
- 'H' on bottom of body base indicating 'High Security'

MATERIAL

- Made of carbon steel with zinc chromate finish
- ABS plastic body on locking case

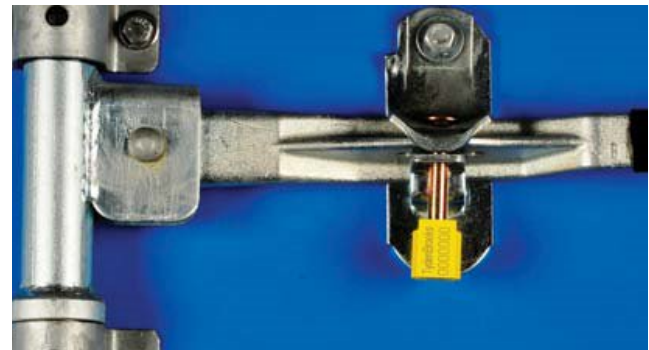
DIMENSIONS

Bolt: 3.5" (89mm) long and 3/8" (9.5 mm) in diameter.

Bolt head and lock body conform to ISO 17712: 2013 specifications

STRENGTH CHARACTERISTICS

- Average pull-apart force is 4,713 lbs (2,138 kg, 21.0 kN)
- Average cutting force (shear) is 5,477 lbs (2,484 kg, 24.4 kN)
- Average impact force is 30-29 ft-lb (41-53 Nm)
- Bending moment: 63 ft-lb (85 Nm)



Intermodal II® Bolt Seal



MARKING/PRINTING

- Minimum quantities apply to customized versions of this product – please call for details
- Stock seals have white locking cases and are lasered with “SEALED”
- Characters are 1/4" (6.35mm) high
- Heat stamping (6 digit) or laser barcode marking also available

STANDARD COLORS

Standard Casing Colors: White / Yellow



PACKAGING

Stock Packing: 100 per box
Stock Weight: 16 lbs (7.26 kg)
Stock Carton size: 11.5"x11.5"x5" (29cmx29cmx13cm)

Standard Packing: 200 per box
Weight: 31 lbs (14 kg)
Carton size: 18"x11"x5" (46cmx28cmx13cm)

