

# Gemini Tote Seal

The Gemini Tote Security Seal is a dual-numbered fixed length plastic security seal designed specifically to secure tote boxes used to transport merchandise from one location to another. Since totes require two seals to be properly secured, the Gemini Tote Security Seal is always manufactured in “twin” sets with identical numbers.

The Gemini Tote Seal is used significantly within the Retail, Pharmaceutical, Cargo/Freight & Cash-In Transit Industries.

## APPLICATIONS

- Tote Boxes
- In-flight Service Carts
- Storage Equipment
- Trailers w/multiple doors

## FEATURES

- Available as a Standard Product
  - Order online and GET IT NOW, FOR LESS!
- Durable, all-plastic, one-piece construction
- Patented tamper-resistant locking mechanism and design
- Thin, flat sealing strap designed to fit most totes
- Identically numbered and hot stamped with a name or logo

## MATERIAL

- High Density Polyethylene and Acetal

## DIMENSIONS

Standard Length: 5" (127mm)

Custom Length: 7" (178mm)

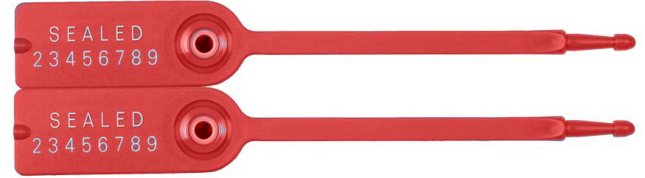
Operational Length:

5" Seal: 3" (76mm)

7" Seal: 5" (127mm)

Diameter when locked:

5" Seal: 1" (25.4mm)



# Gemini Tote Seal

## STRENGTH CHARACTERISTICS

Break strength: HDPE: ~ 35 lbs (15.8kg)

## MARKING/PRINTING

- Standard: Heat Stamped two lines of up to 10 characters and 5-10 digits

## COLORS

Standard Color: Red / Blue / Green / White / Yellow / Orange



## PACKAGING

2 per set

1,000 per carton (500 sets)

Carton Dimensions:

5": 11.5" x 9.5" x 12.5" (292mm x 241mm x 318mm)

7": 11" x 9.5" x 13" (279mm x 241mm x 330mm) Carton

Weight (Gross):

5": 5.25 lbs. per carton (2.38kg)

7": 6.5 lbs. per carton (3kg)

