



# DUAL CHANNEL<sup>®</sup> PADLOCK SEAL

**TydenBrooks<sup>®</sup>**  
SECURITY PRODUCTS GROUP

The Dual Channel Padlock Seal is designed to provide greater tamper-evidence and tamper-deterrence. It features a recessed channel on each side of the body. Once sealed, any attempt to withdraw the hasp will cause it to pierce the body and enter the channel, thereby providing visual evidence of tampering.

## APPLICATIONS

- In-flight Service Equipment
- Metering-Related Applications
- Pharmacy Boxes & Cabinets
- Drums
- Utility Meters
- ATM Cassettes
- Oriental Carpets
- Tote Boxes

## FEATURES

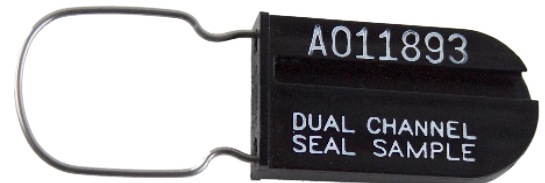
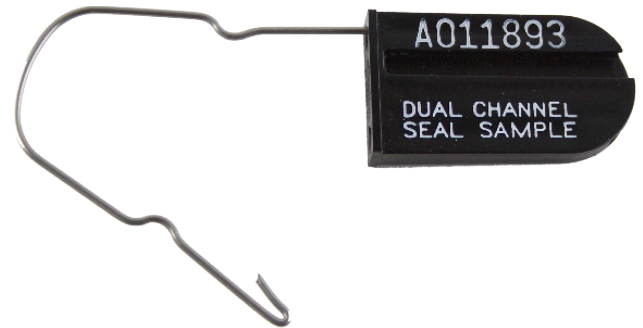
- Tamper-evident body design with two recessed channels
- Tamper-resistant wire hasp
- Metal hasp penetrates body of seal if attacked
- Hasp will pass through apertures of minimum 1/8" (3.2mm) diameter

## MATERIAL

- Body: Acrylic or Polyethylene
- Hasp: .047" (1.2mm) stainless steel wire

## PACKAGING

- Standard Packaging: 1,000/Box - 5,000/Carton
- Carton Dimensions: 41" x 14" x 11" (102.5cm x 35cm x 28cm)
- Carton Weight: Gross: 58 lbs (26 kg)



# DUAL CHANNEL® PADLOCK SEAL



## MARKING/PRINTING

- Heat stamped with company name/logo and 7 digits

## STANDARD COLORS

- Red, Blue, Green, White, Yellow, Orange, Gray, Black, Dark Blue, and Dark Green

